

FALL 2016

Crossing Paths

Perspectives of Troy Christian Counseling Centers

**SAVE
THE
DATE!**

**Annual
Pastoral
Open
House**

**Thursday,
October 13,
2016**

**9:00 am -
12:00 pm**

**Troy
Location**

888 W. Big Beaver
#1450 Troy 48084



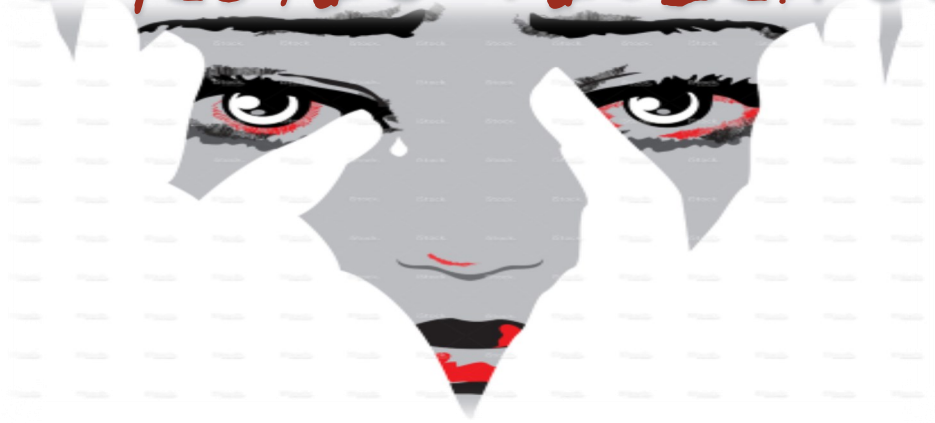
Free Seminar

Full Breakfast Served

Join us for our Annual Pastoral Open House!

**Thursday, October 13, 2016
9:00 am to 12:00 pm**

DOMESTIC VIOLENCE:



Identifying the Signs of Abuse, How to Help & When to Refer

Keynote Speakers:

LaTanya Carter, PhD, LP

Director of Pastoral Care Services

Harry Broomfield, PhD, LPC

Executive Director

Call to reserve your seat: 248-244-8644
Pastoral staff welcome.

Check out our website at PERSPECTIVESOFTROY.COM

Upcoming Pastoral Care Seminar

As part of our commitment to supporting church leaders, Perspectives will continue to offer free quarterly educational seminars. At these seminars, Christian counselors discuss common mental health problems in the church and offer guidance to pastors and pastoral staff.

Our next seminar will be:

Compassion Fatigue: The Importance of Self-Care for the Caregiver's Soul

Thursday, January 19, 2017

9:00 am – 10:30 am

Perspectives of Troy Christian Counseling Centers, Troy location

888 W. Big Beaver #1450, Troy, MI 48084

SEATING IS LIMITED. CALL TO RESERVE YOUR COMPLIMENTARY SEAT!

CONTINENTAL BREAKFAST WILL BE SERVED

(248) 244-8644

Emotional Intelligence and Psychological Testing

While many people think of psychological assessments as determining what is “wrong” with us, numerous psychological assessments can be used to determine what is “right” with us.

Strengths-based assessments are used in many business organizations to assess leadership qualities and readiness for the job. Churches are now starting to do the same.

One such strengths-based assessment examines *emotional intelligence* – the ability to understand one's own and others' emotions and respond appropriately to them. Awareness of self and others has been shown to be an important characteristic of successful leaders. Having knowledge of strengths and weaknesses in areas of emotional intelligence can better inform decisions for leadership placement. It can also assist with training and mentoring potential church leaders.

Perspectives offers a number of these strengths-based psychological assessments, including a comprehensive emotional intelligence assessment for **church leaders**. Testing is particularly helpful in influential positions or those that require healthy critical thinking. We also offer psychological assessments for **missionaries**, who are often required to have a mental health assessment before leaving for and after returning from a mission.

**Call today for more information on how Perspectives
can meet your church's psychological assessment needs!**

(248) 244-2844

Join our email list to receive updates on all our events and services!

What We Don't Know About Domestic Violence Could Hurt Her

By LaTanya Carter, PhD, LP
Director of Pastoral Care Services

A young woman comes to your office, timid and nervous. She says she wants to talk to you but only stutters over her words. She avoids eye contact with you. With every noise in the waiting room outside your office, she looks at your closed office door as if anticipating someone to walk through. After a few minutes of partial statements and awkward silences, she finally asks that you pray for her. As you bow your head to pray for her unknown circumstances, you can feel her continuing to vigilantly listen and watch. Before you can finish saying "Amen" she's gone - she all but runs out of your office door. That Sunday you see her, her husband, and their children after service. She was smiling as she greeted you, clinging closely to her husband. It was as if she was a different person. Yet, there was something about the situation that left you feeling unsettled...

The CDC estimates that nearly 32% of adult women experience intimate partner violence during their lifetimes.

This woman's story could reflect the story of millions of American women who experience domestic violence (DV). While men and children are also victims of DV, women are nearly four times as likely as men to experience DV. Approximately 32% of women experience physical violence in

intimate relationships during their lifetime. This staggering rate includes various types of violence from hair pulling to severe assault and battery. Unfortunately, the consequences of DV extend well beyond physical injuries. Much like the woman in the story, victims of DV are often anxious and hypervigilant – constantly anticipating the next traumatic experience. This heightened sense of fear is often accompanied by other psychological symptoms such as depression, suicidality, low self-esteem, emotional numbness, and inability to trust others.

A Georgetown University study reported pastors grossly underestimate the occurrence of DV in their congregations.

DV AND THE CHURCH

There is little information about DV in the faith community. One of the reasons for this could be because of the scenario described above. Perpetrators of DV often use threats and intimidation as methods of control. These methods intensify the fear these women experience and decrease the chance they will seek help. They may make special efforts to appear happy in public so as to not draw attention to their distress. These charades make it difficult for pastors to recognize that a serious problem exists. In fact, recent research indicated

pastors significantly underestimate the rate at which DV occurs among families in their congregations. Approximately 40% of pastors estimated that less than 5% of their congregation have been victims of DV. In reality, the estimated occurrence of DV is closer to 30-35%.

DOMESTIC VIOLENCE:
*Identifying the Signs of Abuse,
How to Help & When to Refer*
Thursday, October 13, 2016
9:00 am - 12:00 pm

Domestic violence is a complex issue affecting millions of Christian families annually. More than 80% of pastors reported they would take the proper steps to reduce the occurrence of DV if they had the training and resources to do so. Perspectives of Troy is providing that training opportunity. Our Annual Pastoral Open House will provide valuable information on the types of DV, the characteristics of a DV victim and perpetrator, and the best methods for intervening safely and effectively.

You do not want to miss this!

248-244-8644

Call today to reserve a seat!

RESOURCES

1. Centers for Disease Control (<http://www.cdc.gov/violenceprevention/intimatepartnerviolence/index.html>)
2. Sojourners of Georgetown University (<http://www.christianitytoday.com/edstetzer/2014/june/church-and-its-response-to-domestic-and-sexual-violence.html>)

**PERSPECTIVES OF TROY
CHRISTIAN COUNSELING CENTERS**

Two locations. One great resource.

888 W. Big Beaver, Ste 1450
Troy, MI 48084
248-244-8644

4151 17 Mile Rd., Ste D
Sterling Heights, MI 48310
586-268-6712

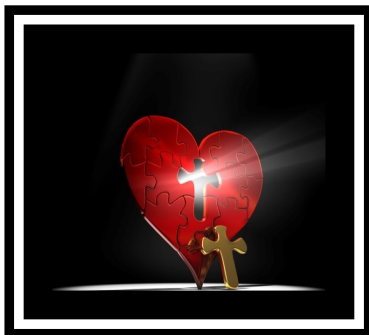
Helping You Help Others

Check out our website at PERSPECTIVESOFTROY.COM

DID YOU KNOW?

To better serve you, we have expanded our education and training services dedicated to integrating Biblical and psychological principles.

The *Perspectives Initiative for Pastoral Care and Education* provides:



- ♦ *Psychoeducational seminars and workshops*
 - ♦ *Confidential, faith-based counseling*
 - ♦ *Assessments for leaders and missionaries*
 - ♦ *Customized congregational trainings*
 - ♦ *Monthly e-newsletter for pastors*
- And much more!*

Visit our website for more information: perspectivesoftroy.com
Pick up an informative brochure at our next seminar!